

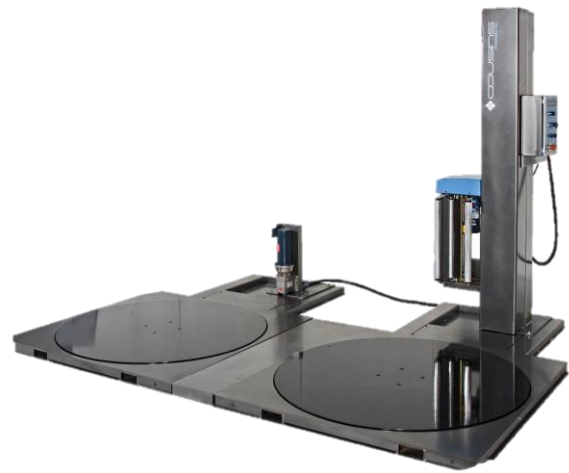
## INCREASE YOUR PRODUCTIVITY WITH TWO TURNTABLES

The main advantage of a dual turntable machine is the ability to have one pallet being wrapped while the operator brings another to the second turntable. The operator can alternate loads increasing productivity.



### **HP-2100-SRT-DT**

Dual turntable option also available  
on HP-1100-S and HP-SW



### **LP-2100-SRT-DT**

Dual turntable option also available  
on LP-1100-S and LP-SW

## **ANOTHER SIMPLE AND IN-EXPENSIVE METHOD OF INCREASING PRODUCTIVITY IS THE AUTO FILM START OPTION:**

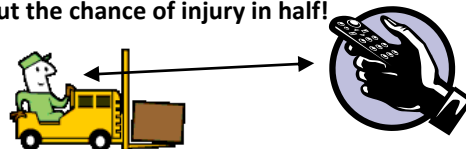
### **OAFS – AUTO FILM START OPTION**

Works for forklifts, powered walkies and manual pallet jacks

The operator makes 2 trips on & off the lift and has to bend over twice to attach and cut the film. This wireless remote cycle start device eliminates the least important trip allowing the operator to complete the more important task of properly treating the loose film tail. It is more efficient with better results than any automatic film cutting device. For a more complete explanation click on :

[Auto Film Start Option](#)

Reduce the number of times the operator has to bend over to attach and cut the film by 50% with a wireless remote. Cut the chance of injury in half!



- ❖ Affordable and simple machines with more standard features than any other pallet wrapper in this price range
- ❖ A quality machine built with quality components and supported by a local qualified distributor

We invite you to go on line at  
**[www.cousinpackaging.com](http://www.cousinpackaging.com)**  
For more information or call your local distributor

**1-888-209-4344**